



Organic Bioenergetic Technology from KitCore Labs.

Welcome to the Future. Welcome to You: Enhanced.

www.kitcorelabs.com

When Dr. Stephen Taylor's research led him to a breakthrough discovery, he could only begin to imagine the many possibilities for utilizing this process to enhance people's health and well-being. Today, KitCore Lab's technology is being used in a variety of products including clothing, bedding liquids and creams.

When a product undergoes the KitCore process, it is subjected to an extremely low level of an electromagnetic charge with the intent of freeing electrons within the end product. We know, thanks to the work of pioneering scientists such as Dr. Ross Adey, that the human body responds more readily and very positively to a specific range of extremely low-level electromagnetic frequencies.ⁱ

KitCore's proprietary low-level frequency process has been shown to positively affect a variety of end products in a stable manner so that the benefit is absorbed and retained.

The Science Behind the Technology

Water: This unique medium has long been viewed as the solution through which life developed and emerged. Without water life cannot be sustained. Recent studies have displayed water's affinity to hold and carry a negative charge. For example, when ions within water gain electrons and are negatively charged, the hydrogen bonds became 6 times more abundant.ⁱⁱ This is a very positive thing for the human body since hydrogen is one of the greatest free radical scavengers and has been studied to have anti-cancer effects.ⁱⁱⁱ

Our independent lab-testing shows that **KitCore's low-frequency process causes the exposed item to emit a statistically significant greater number of electrons.** The greater number of electrons increases availability of negative charge which can easily cross a cell membrane increasing cellular absorption of the charge.^{iv}

An "electron" is the smallest unit of negative charge in nature. When they reach our bloodstream, negative ions (molecules with extra electrons) are believed to produce biochemical reactions that increase levels of the mood chemical serotonin, which helps alleviate depression, relieve stress, and boost daytime energy, amongst a host of other researched benefits.^v

Thanks to the Kit Core technology, we can absorb these electrons into our cells more easily and experience the benefits.

- **Less inflammation.**
- **Greater pain relief.**
- **Increased natural energy**
- **Greater mental clarity.**
- **Increased overall well-being.**

KitCore's process amplifies the ability for the infused product to give away electrons, which are then more readily absorbed by an individual.



Organic Bioenergetic Technology from KitCore Labs.

Welcome to the Future. Welcome to You: Enhanced.

www.kitcorelabs.com

The report from KitCore's independent lab testing on charged versus non-charged fluid showed a significant difference in electron activity.

Independent Lab Testing: (Full report available on request)

A recent test on fluid comparing KitCore charged vs non-charged fluid showed a greater than 30% increase in absorbability and intensity.

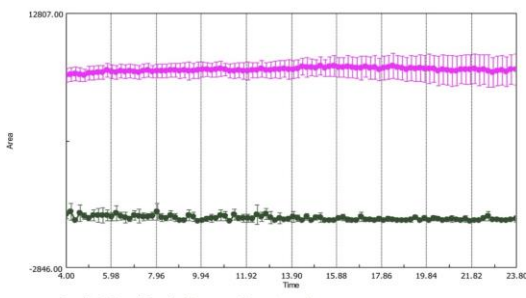
GDV Measurements of charged & non-charged fluid - Report 3-10-2017, EXCERPT:

Figure 1 shows the time series of the 100 images (from frame 21 to frame 120) analyzed for each of the 2 water samples for the Area of the glow around water drops. If the confidence interval does not overlap, the 2 samples can be considered statistically significantly different. **In Figure 1, they clearly do not overlap with the mean area of the charged sample being much larger than the mean area of the control sample.**

Sample 1: Control Sample *Mean + confidence interval*

Sample 2: Active Sample *Mean + confidence interval (Kit Core's charged sample)*

Figure 1: Area (this gives an indication of the energy of the electrons emitted)



Independent lab testing on fluid showed over 30% more absorbability in the KitCore charged versus non-charged fluid.

GDV Measurements of charged & non-charged fluid - Report 3-10-2017, EXCERPT:

Average Intensity Analysis: If the confidence interval of the samples does not overlap, the 2 samples can be considered statistically significantly different. In Figure 2, they clearly do not overlap.

Sample 1: Control Sample *Mean + confidence interval*

Sample 2: Active Sample *Mean + confidence interval (Kit Core's charged sample)*

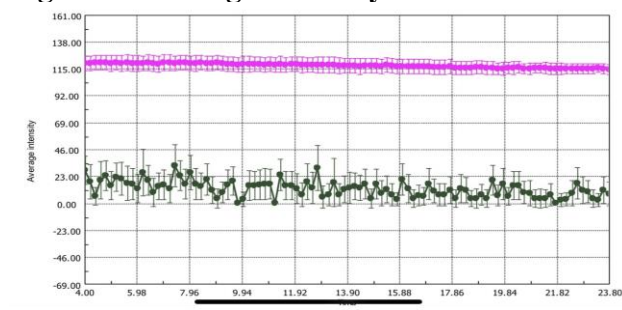


Organic Bioenergetic Technology from KitCore Labs.

Welcome to the Future. Welcome to You: Enhanced.

www.kitcorelabs.com

Figure 2: Average Intensity



What this means for you:

This means that more electrons are available to react with positive charges, compounds or molecules in the body and thus more electrons are available to quench inflammation.

Significant results were also obtained for Form Coefficient, Entropy and Spatial Fractality, all three being related to coherence in the fluid sample that was studied. All 3 parameters point toward increased energetic activity in Kit Core's charged sample vs the non-charged or control sample.

KitCore's independent testing (cited above) was conducted by Gaetan Chevalier, PhD who works in the field of engineering, physics, atomic physics, and laser spectroscopy. Chevalier is also the director of the Earthing Institute and wrote the appendix to the book "Earthing; The Most Important Health Discovery Ever".

Earthing, a scientifically validated process, advocates transferring the Earth's natural, negative charge into the body to create health and well-being.^{vi} This is the same idea behind the Kit Core technology: Increase the body's absorption of electrons and create better health.

"The body is a highly intelligent electro-biochemical system that is strongly influenced by its internal electrical environment. Countless electrical charges within this system regulate countless biochemical reactions." Wrote Chevalier.

The numerous studies completed on Earthing has brought Chevalier to conclude that contact with the Earth's surface, which is negatively charged, "maintains the body's electrical stability and the normal functioning of its self-regulating and self-healing mechanisms."

In our modern era, most of us are no longer in direct contact with the Earth's natural, beneficial negative charge. This is where the introduction of the Kit Core charged product can have such a positive effect on the human body.

The Kit Core process is a groundbreaking achievement, with far reaching implications for advancing health and wellbeing. This cutting-edge process can make a great product even more potent, setting it above its competitors.



Organic Bioenergetic Technology from KitCore Labs.

Welcome to the Future. Welcome to You: Enhanced.

www.kitcorelabs.com

We look forward to working with you,

Kit Taylor, DC, DABCN

Joe DiBernardo

www.kitcorelabs.com

REFERENCES

ⁱ Markov, M.S. "Biological Windows": A Tribute to W. Ross Adey. *Environmentalist* **25**, 67–74 (2005).
<https://doi.org/10.1007/s10669-005-4268-8>

ⁱⁱ Water favors negative charge: Scheu, R., Rankin, B. M., Chen, Y., Jena, K. C., Ben-Amotz, D. and Roke, S. (2014), "Charge Asymmetry at Aqueous Hydrophobic Interfaces and Hydration Shells." *Angew. Chem.*, DOI: [10.1002/ange.201310266](https://doi.org/10.1002/ange.201310266)

ⁱⁱⁱ Runtuwene J, Amitani H, Amitani M, Asakawa A, Cheng K, Inui A. 2015. Hydrogen–water enhances 5-fluorouracil-induced inhibition of colon cancer. *PeerJ* 3:e859 <https://doi.org/10.7717/peerj.859>

^{iv} Kahn Academy Types of signaling molecules and the receptors they bind to on target cells. Intracellular receptors, ligand-gated ion channels, G protein-coupled receptors, and receptor tyrosine kinases.
<https://www.khanacademy.org/science/ap-biology/cell-communication-and-cell-cycle/signal-transduction/a/signal-perception>

^v Perez V, Alexander DD, Bailey WH. Air ions and mood outcomes: a review and meta-analysis. *BMC Psychiatry*. 2013 Jan 15;13:29. doi: 10.1186/1471-244X-13-29. PMID: 23320516; PMCID: PMC3598548.

^{vi} **Earthing: Health implications of reconnecting the human body to the Earth's surface electrons**, *Journal of Environmental and Public Health* 2012: www.hindawi.com/journals/jeph/2012/291541

Additional references:

Dr Ross Adey Studies:

<https://onlinelibrary.wiley.com/doi/epdf/10.1002/jcb.2400510405>

<https://link.springer.com/article/10.1007/s10669-005-4268-8>

According to the Merriam-Webster Online Dictionary, an electron is "an elementary particle consisting of a charge of negative electricity equal to about 1.602×10^{-19} coulomb and having a mass when at rest of about 9.109×10^{-31} kilogram or about $1/1836$ that of a proton."